

HOW TO KEEP INFORMED

Below are ways to contact us or view the full details regarding construction updates and detour information.



 Call 1.800.671.6872

The project hotline is open 24 hours a day, 7 days a week, ready for your questions and comments. Call us at 1-800-671-6872.

 info@NJTA14A.com

Email info@NJTA14A.com or fill out the contact form on NJTA14A.com to submit your questions and comments.

 Visit NJTA14A.com

Visit the project website at NJTA14A.com for detailed information about the design and construction of the new Interchange 14A.

 Receive Project Updates

Prefer to receive project information in your email inbox? Go to NJTA14A.com and sign up to receive future project updates.



The New Jersey Turnpike Authority is making vital improvements to Interchange 14A in the cities of Bayonne and Jersey City.

These improvements will reduce delays on the Newark Bay-Hudson County Extension, relieve congestion on city streets, create jobs, improve air quality, and encourage regional economic development. The project — funded by toll dollars — was designed to minimize disruptions in the community and to maximize community outreach.



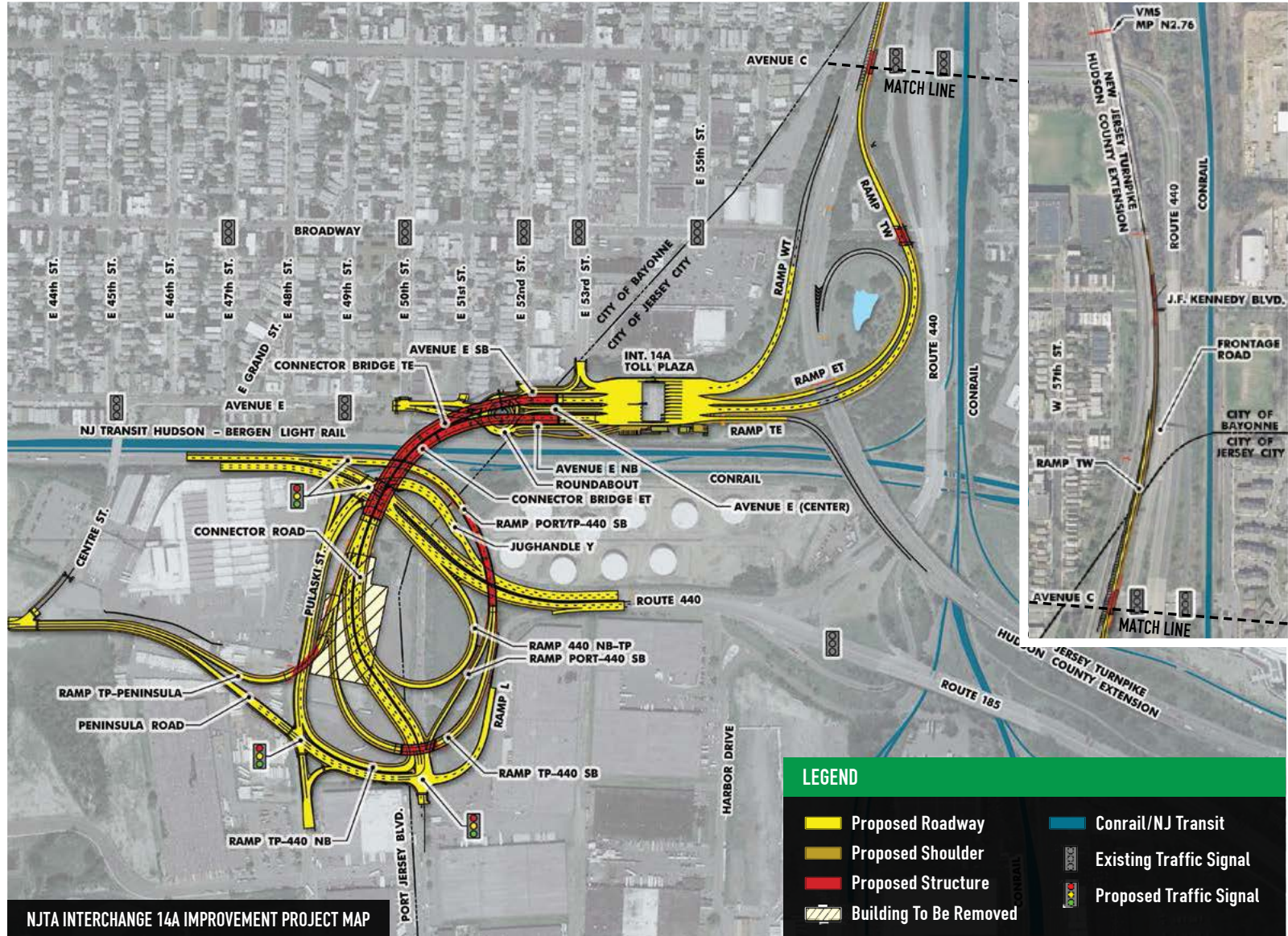
VISIT NJTA14A.COM TO LEARN MORE

PROPOSED IMPROVEMENTS

Project plans call for increasing the toll plaza capacity from 11-lanes to 13-lanes, increasing the ramp from Interchange 14A to westbound Hudson County Extension to 2-lanes, replacing the existing 2-lane connector bridge with a new 4-lane structure to Routes 440, 185 and Port Jersey Boulevard, and building a new flyover ramp from the interchange and Port Jersey Boulevard to Route 440 south. The existing traffic signal at E 53rd Street will be eliminated and the new Roundabout will maintain permanent access to the NJ Turnpike Interchange 14A.

PROJECT SCHEDULE

- ✔ **PROJECT PLANNING**
Summer 2009
- ✔ **PUBLIC INFORMATION CENTERS**
Winter 2009, Winter 2011 & Summer 2011
- ✔ **HELD PUBLIC HEARING**
Summer 2012 & Fall 2014
- ✔ **BEGIN CONSTRUCTION**
Early 2015
- **CONSTRUCTION COMPLETE**
Fall 2018



LEGEND

- Proposed Roadway
- Proposed Shoulder
- Proposed Structure
- Building To Be Removed
- Conrail/NJ Transit
- ◻ Existing Traffic Signal
- ◻ Proposed Traffic Signal